

# WELCOME



# 2008 HUCKLEBERRY SUMMIT:

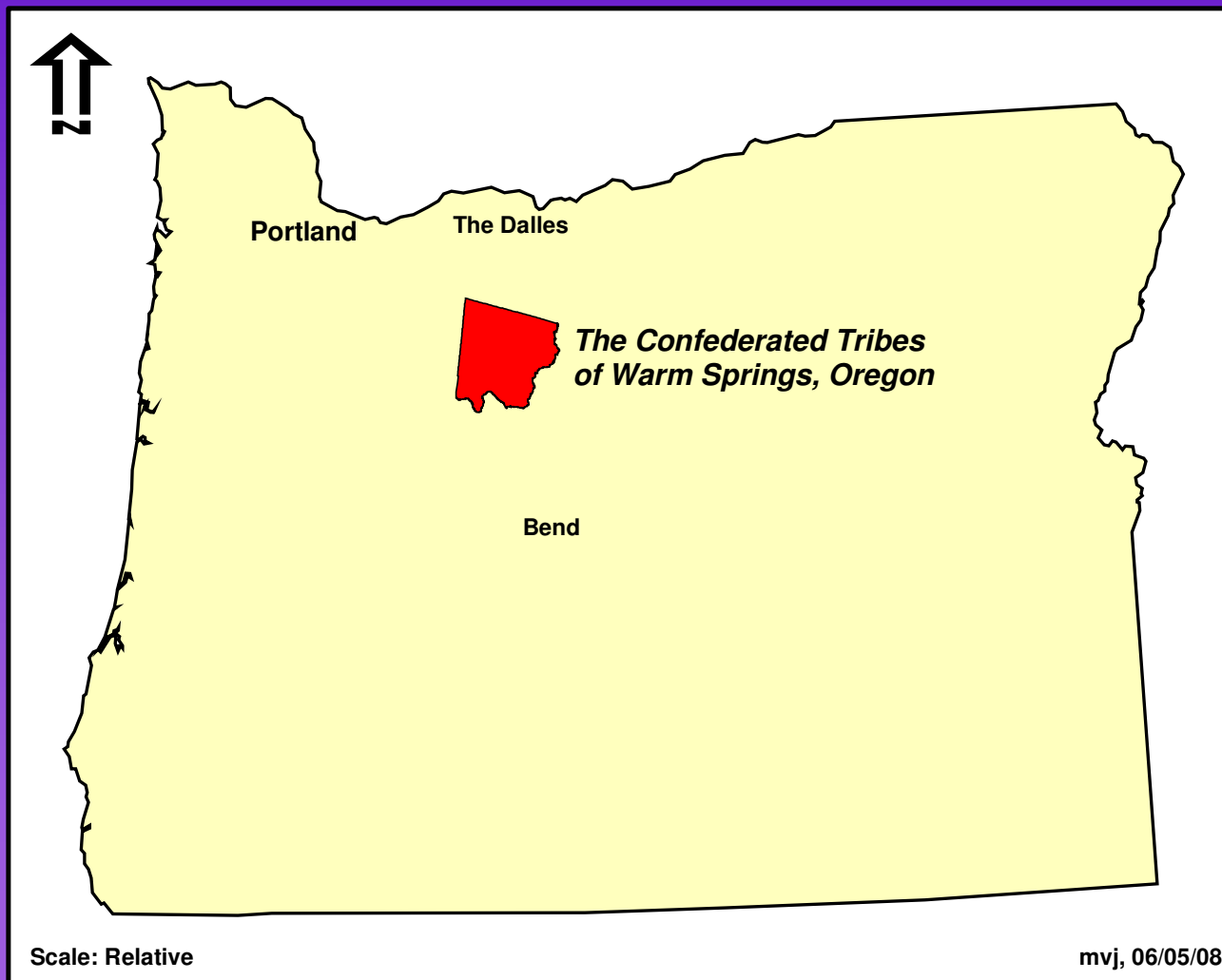
## Introduction to Selected Berry Enhancement Treatments

*Confederated Tribes  
of Warm Springs, Oregon*

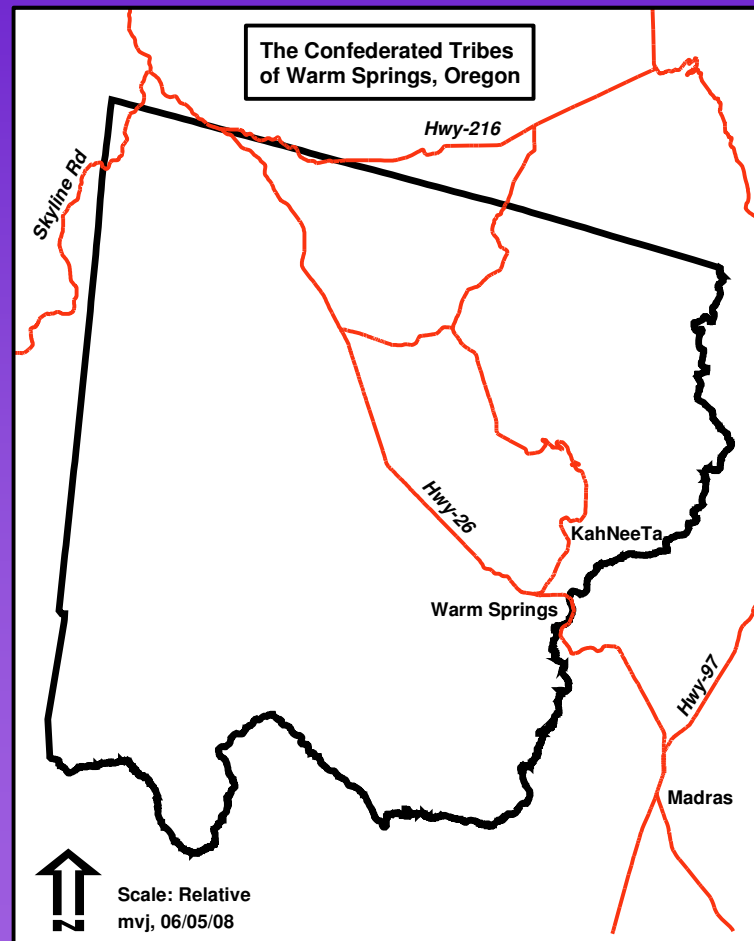
Matt V. Jimenez, Senior Sale Planner  
Bureau of Indian Affairs

A stylized, dark blue mountain range graphic is located in the bottom right corner of the slide, partially overlapping the text area.

# Vicinity Map




# The Confederated Tribes of Warm Springs, Oregon



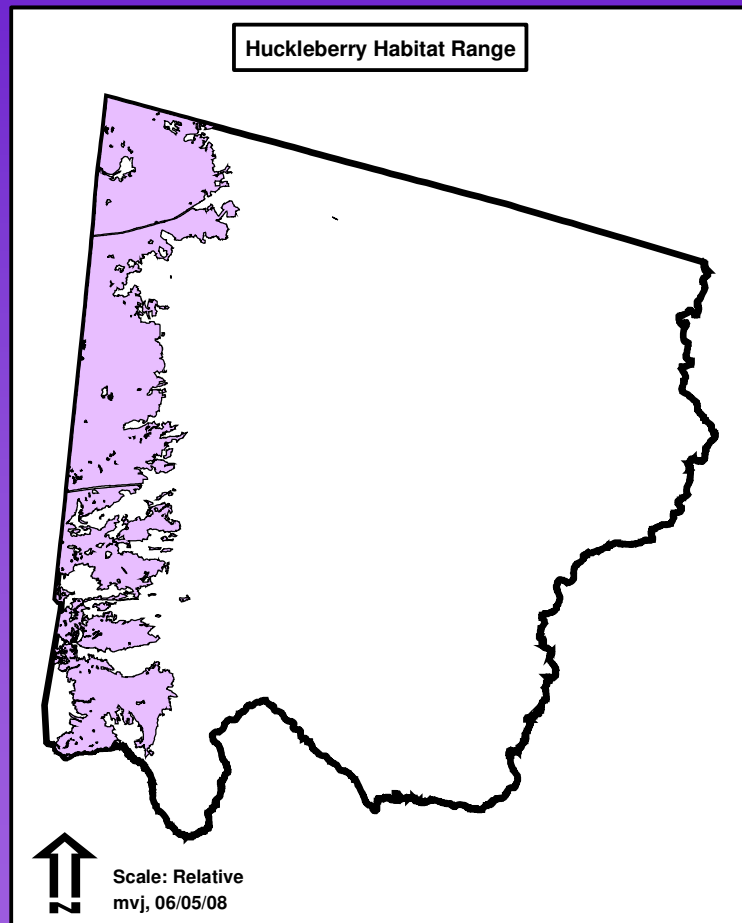
# Presentation Outline

- ◆ Directives/Motivations
  - ◆ Habitat Range
  - ◆ Treatment Areas
  - ◆ Treatment Goals
  - ◆ Treatment Objectives
  - ◆ Operations
  - ◆ Preliminary Results
  - ◆ Maintenance
  - ◆ Future Opportunities
- 

# Directions/Motivations

- ◆ Tribal Voice
  - ◆ Integrated Resources Management Plan (IRMP) Goal:  
*“Locate, evaluate, and protect or enhance cultural resources for use by tribal members”*
  - ◆ Home-Grown Motivation
- 

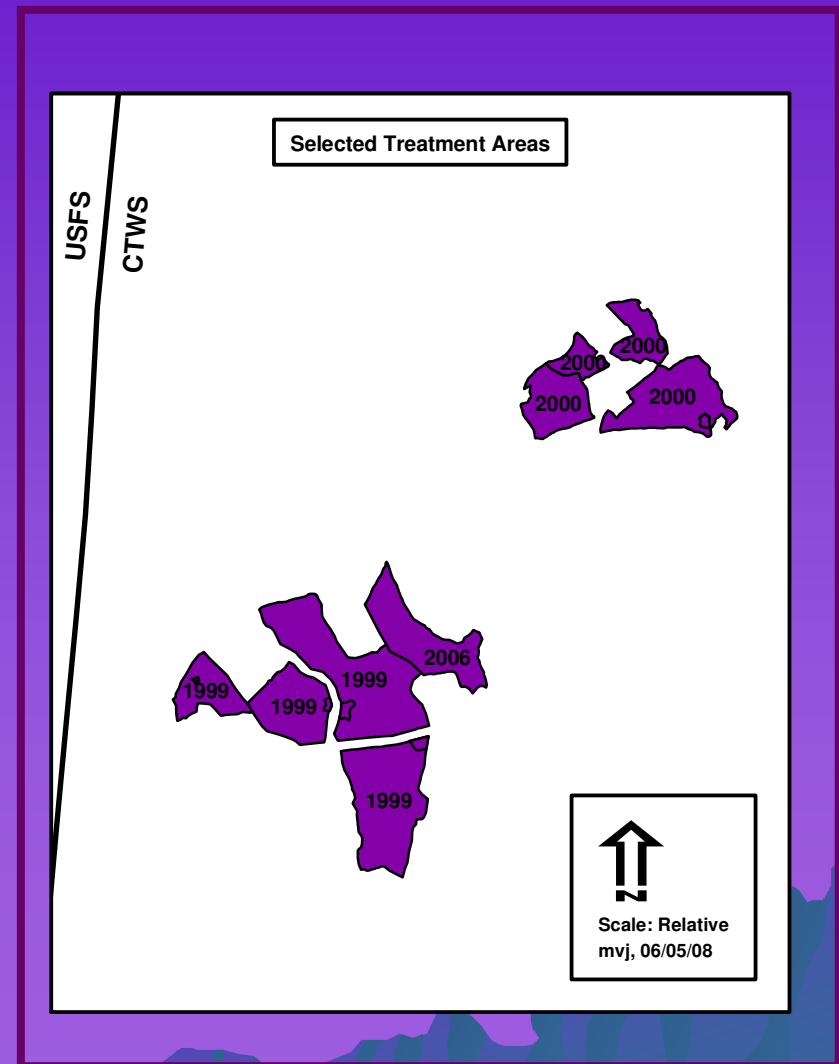
# Huckleberry Habitat Range



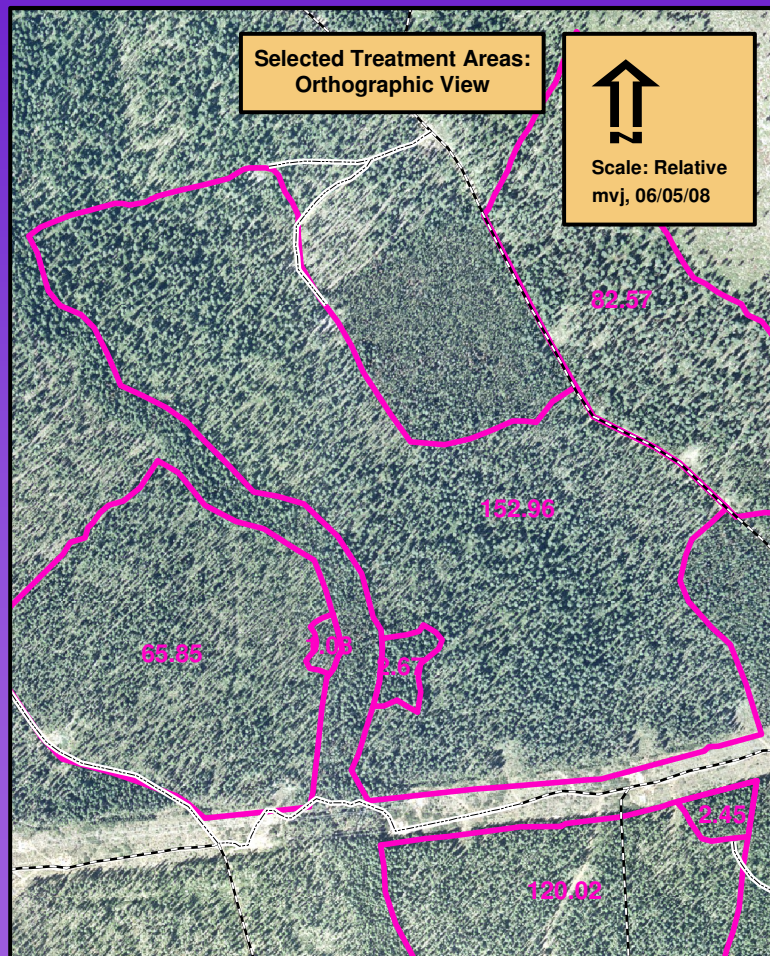
- ◆ Based on GIS query
  - Soil Survey
  - Plant Associations
- ◆ CTWS Acreage:  
≈ 645,799
- ◆ Huckleberry Habitat:  
≈ 93,166 or 14% of  
CTWS

# Selected Treatment Areas

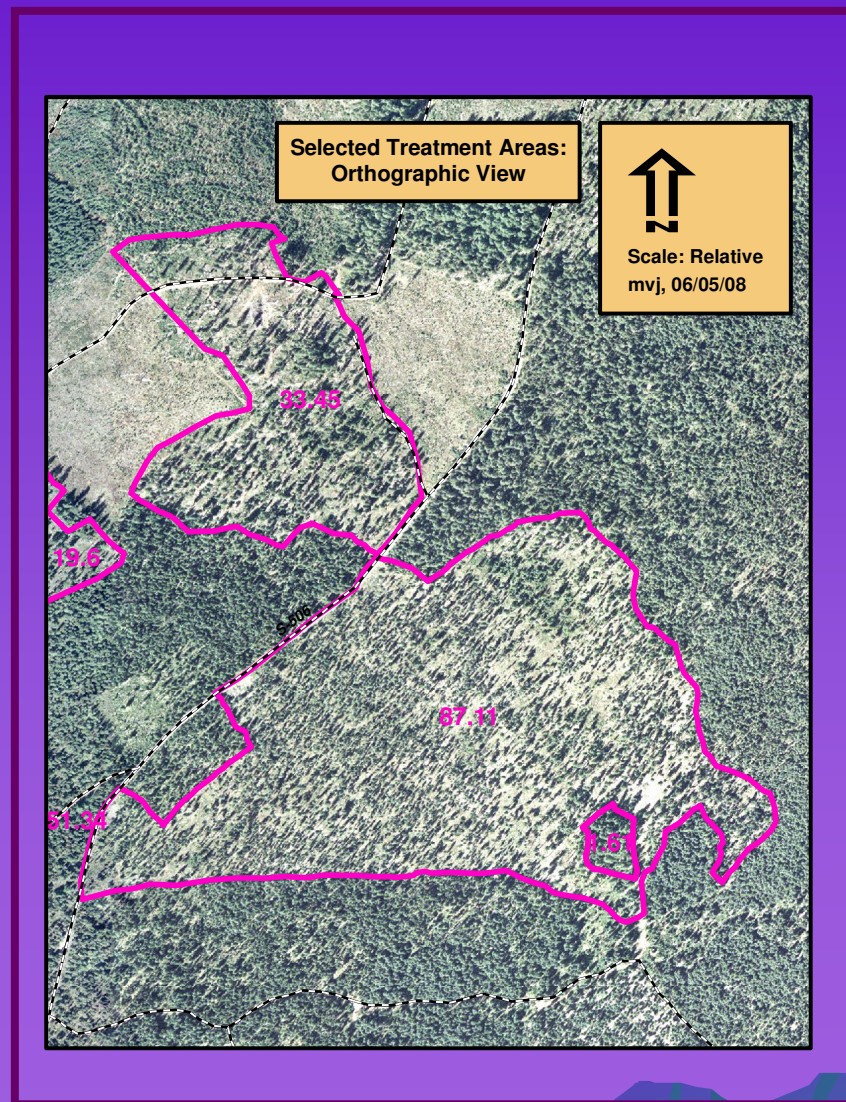
- ◆ Grouped Treatments
- ◆ Prescriptions:
  - Intermediate Thin
  - Shelterwood
- ◆ Acres Treated:  $\approx 662$
- ◆ Plant Associations:
  - Hemlock/Beargrass
  - Mt. Hemlock/LP
  - Silver Fir
- ◆ Soil: Howash & Pinhead (Andesite, Volcanic Ash)
- ◆ Elevation Range: 4,000-4,800 ft
- ◆ Annual Precip: 70-100 in



# Selected Treatment Area



# Selected Treatment Area



# Treatment Goals

- ◆ **Conserve/Protect Huckleberry Shrubs**
- ◆ **Enhance Berry Production**
- ◆ **Slash (Shrubs and Accessibility)**



# Treatment Objectives

- ◆ Protect existing shrubs: log over snow pack of at least 3'
- ◆ Open canopy by thinning:
  - BA 90-110 ft<sup>2</sup>
  - Canopy Closure 30-50 percent
- ◆ Reduce slash: transport treetops to the landings
- ◆ Conserve Trails:
  - PCT 100' No-Entry Buffer
  - Other:
    1. Remove activity slash
    2. Limit skid trail crossings to no closer than 300'
    3. Protect blaze trees



# Operations




- ◆ **Transportation:**
  - **Snow Plowing**
  - **Water Diversion**
- ◆ **Dig out base of trees**
- ◆ **Feller/Bunchers or Processors**
- ◆ **Hand-Fell Oversize**
- ◆ **Skidders or Forwarders**

# Operational Considerations

- ◆ Transportation Costs
- ◆ Logging Costs
- ◆ Wear and Tear
- ◆ Maintenance
- ◆ Landings
- ◆ Sale Design
- ◆ Working Culture (i.e. somewhat extenuating circumstances)



# Preliminary Results


- ◆ Little official monitoring for hard empirical evidence
  - ◆ Site-One:
    - Snow pack sites immediate flush of berries first season following logging
    - Families again using usual and accustomed areas
    - Partial or no snow pack only now recovering
  - ◆ Site-Two: High elevation sites approximately three years for flush
- 

# Maintenance

- ◆ Competing Vegetation
- ◆ Slash Loadings
- ◆ Trail Clearing
- ◆ Thin Overstory



# Future Opportunities

- ◆ Continue with snow pack mitigations
  - ◆ Acceptable level of impacts
  - ◆ Official Management Plan with associated Standards and Best Management Practices
  - ◆ Cable-extraction
  - ◆ Slope constraints
  - ◆ Official monitoring
  - ◆ Control of competing vegetation
  - ◆ Burning
  - ◆ Whatever the winds of change dictate
- 

# Desired Outcome



- ◆ Conservation and Protection
- ◆ Continued Tribal Member Use
- ◆ Compatible with Established Management Objectives
- ◆ Economical
- ◆ Empirical Results

# THANK YOU, BE WELL

